

Executive Director's Report

*May 19, 2025
Executive Board
Hardin Simmons
University, Abilene*



Preparing for God’s Movement

Acts 1

The Problem: Lostness

God's Plan: Seek & Save

Agents: Followers as Witnesses

God's Movement In Acts is...



Holistic:
*It Changes
Everything*

Morse Street Baptist Church



God's Movement In Acts is...



Holistic:
*It Changes
Everything*

Global:
*It Catalyzes
a People*

University of Texas at Arlington Baptist Student Ministry (BSM)



Beach Reach



God's Movement In Acts is...



Holistic:
*It Changes
Everything*

Global:
*It Catalyzes
a People*

Transformational:
*It Changes Us so
that We can be
Agents of Change*

Pastor Strong Cohorts



God's Movement In Acts is...



Holistic:
*It Changes
Everything*

Global:
*It Catalyzes
a People*

Transformational:
*It Changes Us so
that We can be
Agents of Change*

*How do we
reset?*

Repent

Reframe

Responsibility



The Problem: Lostness (16 million)

God's Plan: Seek & Save

Agents: Followers as Witnesses

Missional Theme

**Strengthening a multiplying
movement of churches to live
out the Great Commandment
and Great Commission in Texas and
Beyond.**



GC2 Pathway

Three areas of focus





A GC2 Church

Great Commandment
& Great Commission

Loves God Well

Loves Neighbor
Tangibly

Makes Disciples
of All Nations

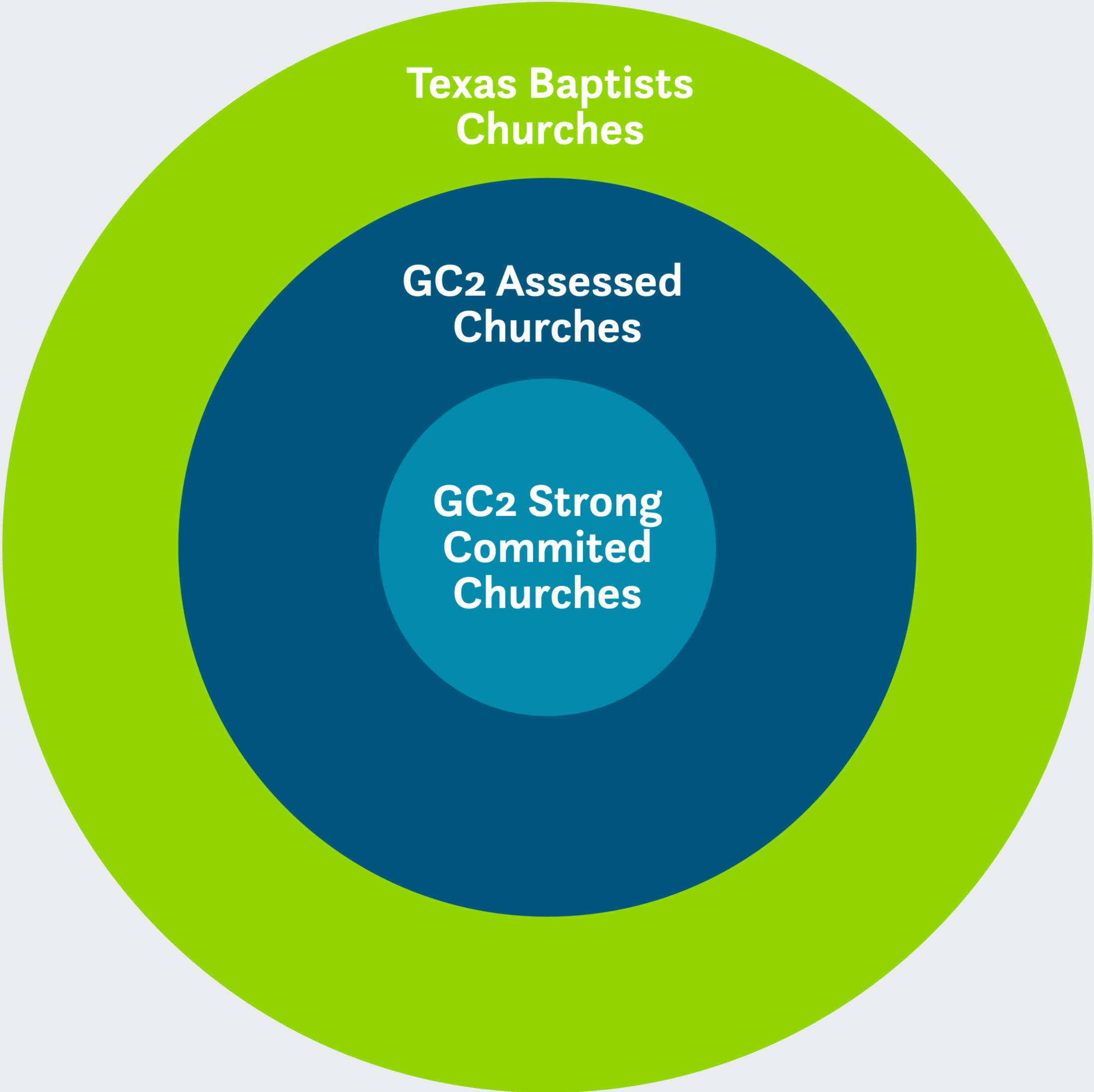
Defining GC2: What does GC2 mean to Texas Baptists?




- Great Commandment (Matthew 22:37-38).
- Great Commission (Matthew 28:19).
- It originated as a missional mindset from Dr. David Hardage.
- Over the last year, it has become a summary of our recently developed missional theme:
 - Empowering a multiplying movement of churches that live out the Great Commandment and Great Commission in Texas and beyond.
- We began to develop a strategy for what it would look like to empower our churches to live this out.

Key components of that strategy are:

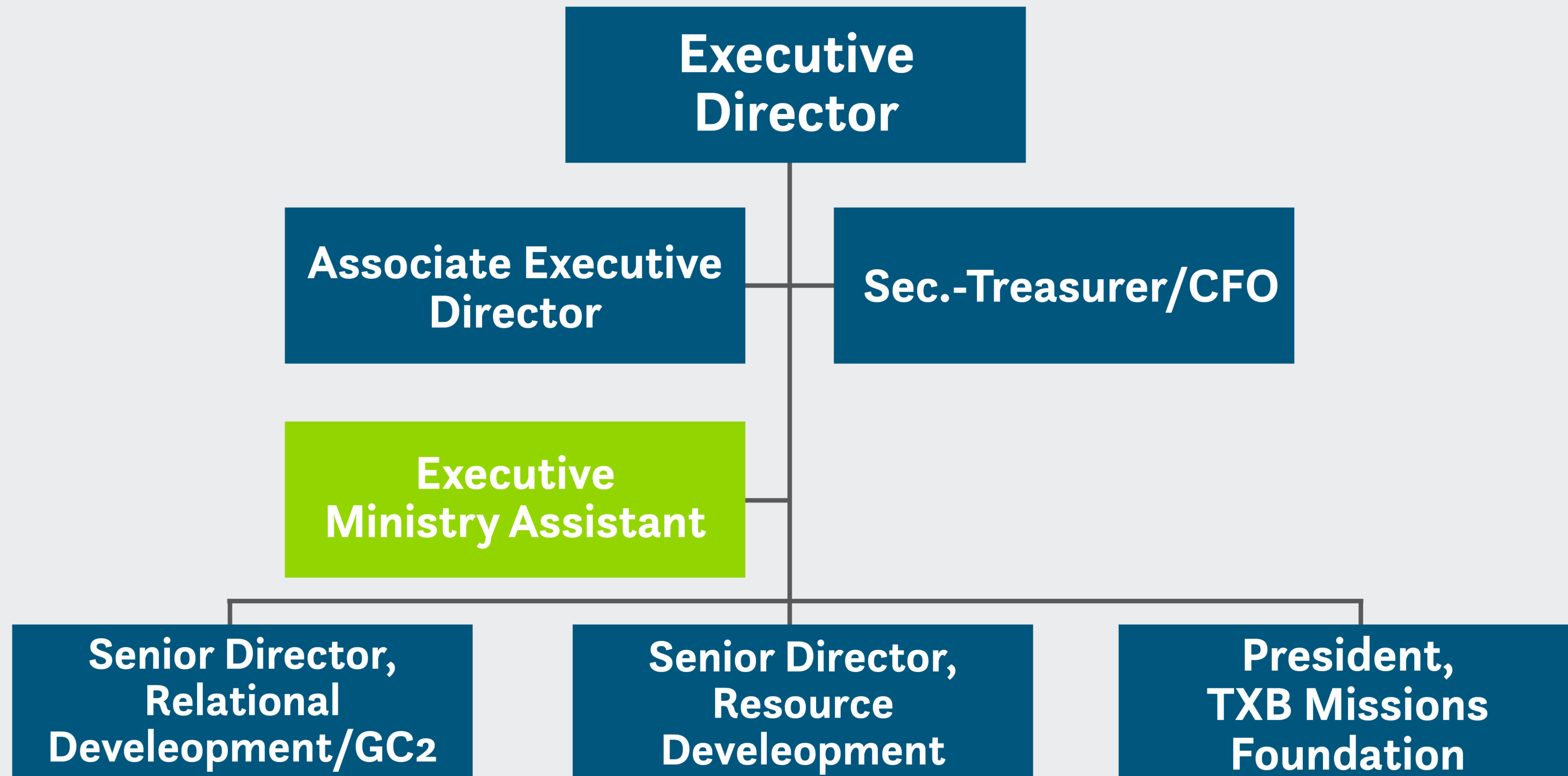
- GC2 Assessments: Texas Baptists facilitated church assessments that help churches define where they are in their journey and how to move forward in key areas.
- GC2 Strong Process: Customized pathways and resources to support churches in reaching their next level based on their current stage of development.

GC2 Engagement Categories

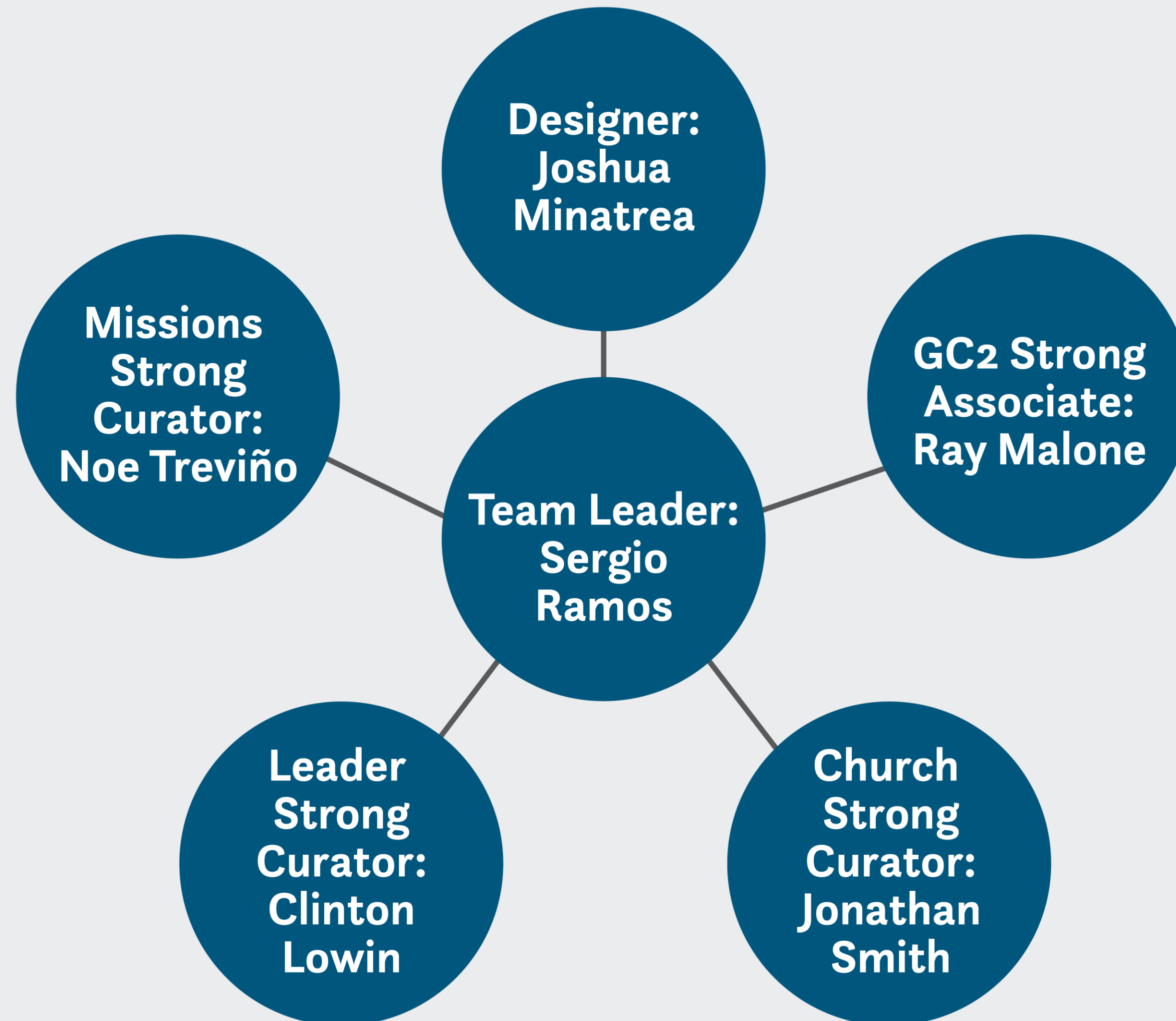


-  Affiliated Texas Baptists churches
-  Affiliated churches that have taken the GC2 Assessment
-  Affiliated churches that are GC2 Assessed and committed to the GC2 Strong Process

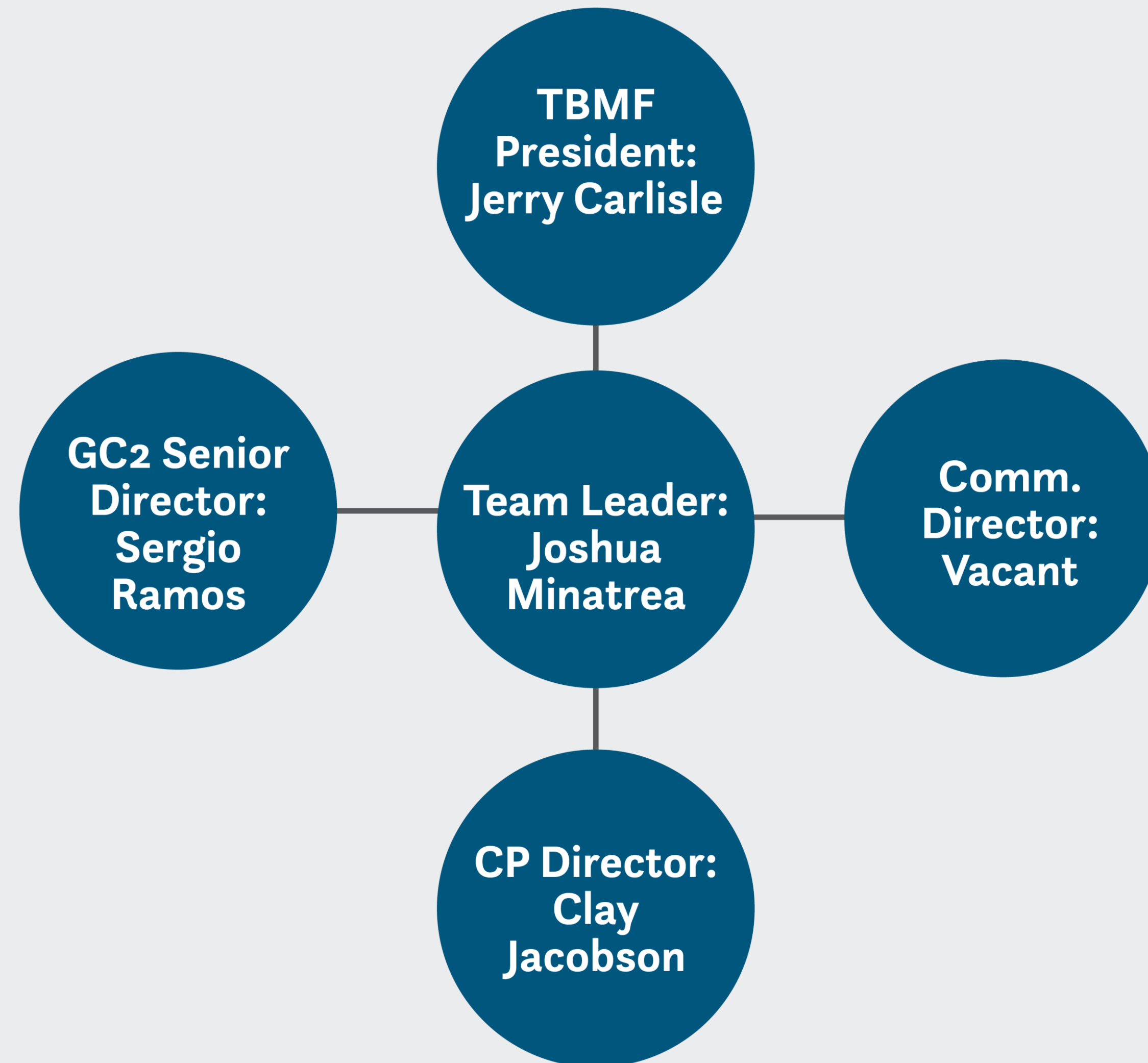
Executive Leadership Team



GC2 Strong Design Team



Resource Development Team





Executive Director's Report

*May 19, 2025
Executive Board
Hardin Simmons
University, Abilene*

